



Scan QR Code for installation  
and operation manual



## 48" SUMMIT OPEN LINEAR LUXURY FIREPLACE

### UNIT DIMENSIONS

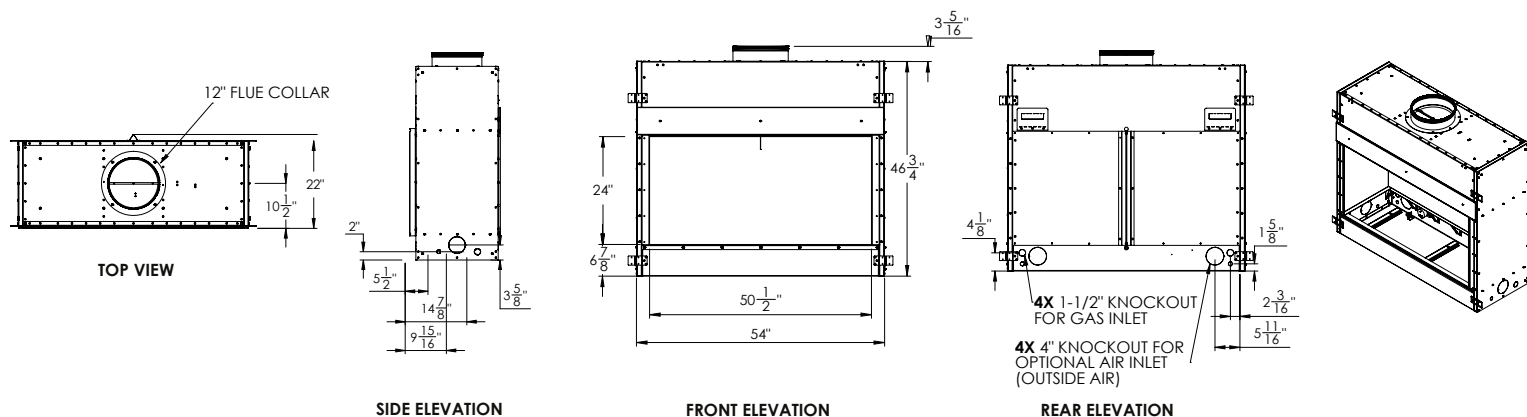
Front Width: 54"

Height: 46  $\frac{3}{4}$ "

Depth: 22"

**BTUs:** SML-48BR-VEN (NG): 40,000 – 60,000  
SML-48BR-VEP (LP): 30,000 – 60,000  
SML-48BRT-VEN (NG): 45,000 – 69,000  
SML-48BRT-VEP (LP): 30,000 – 62,000

### FRONT PHYSICAL DIMENSIONS



### FIREPLACE BURNER OPTIONS

#### BEDROCK CONTEMPORARY



Must add  $\frac{1}{2}$ " reflective glass or lava granules (5 lbs/foot)

— *Optional*

6" Cannonballs in black, gray, or white

48" Western Driftwood Linear Log Set, 9 pieces

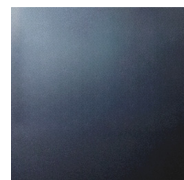
#### BEDROCK TRADITIONAL WITH GLOWFIRE™ LOGS



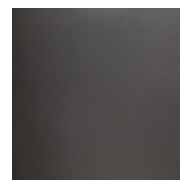
Must add  $\frac{1}{2}$ " reflective glass or lava granules (5 lbs/foot)

Driftwood GlowFire™ logs included.

### FIREPLACE PANELS



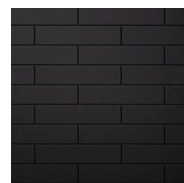
3/8" TEMPERED  
BLACK GLASS



BLACK MATTE



BLACK FLUTED FIBER



OFFSET BLACK  
FIBER BRICK



STACKED GRAY  
FIBER BRICK

### VIEWING REDUCTION KIT

Viewing reduction kits are available as an add-on to reduce the viewing area by 6" in height, from 24" to 18" high. The kit includes the firebox reduction panel and side drywall stops.

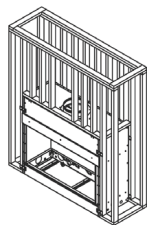
*\*If installing as a corner view or bay corner(s), corner view kits are required.*

### OPTIONAL POWER VENT KIT

Power vent kits are available as an add-on to provide greater flexibility in fireplace placement and vent routing, while ensuring safe and efficient operation.

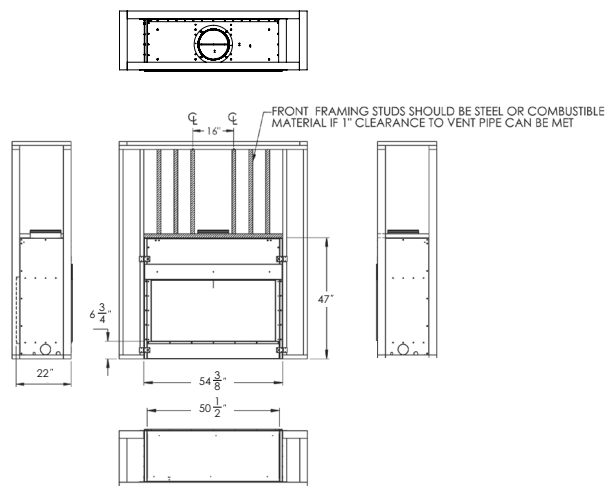
# FRONT VIEW

## FRAMING DIMENSIONS



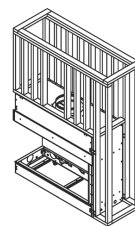
**Width:** 54  $\frac{3}{8}$ " | **Height:** 47" | **Depth:** 22" | **Weight:** 310 lbs

**Bottom to Drywall Stop:** 6  $\frac{3}{4}$ " | **Viewing Area:** 50  $\frac{1}{2}$ "



# LEFT VIEW

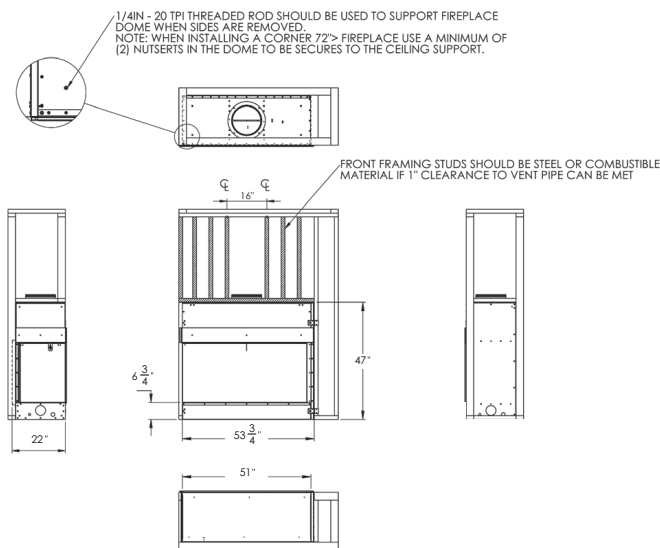
## FRAMING DIMENSIONS



*Reverse for right view*

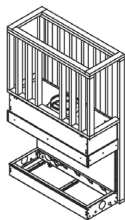
**Width:** 53  $\frac{3}{4}$ " | **Height:** 47" | **Depth:** 22" | **Weight:** 310 lbs

**Bottom to Drywall Stop:** 6  $\frac{3}{4}$ " | **Viewing Area:** 51"



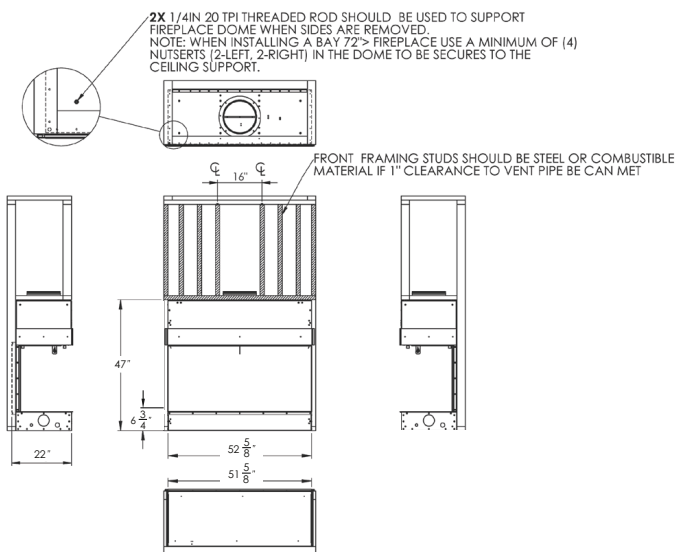
# BAY VIEW

## FRAMING DIMENSIONS



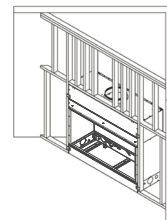
**Width:** 52  $\frac{5}{8}$ " | **Height:** 47" | **Depth:** 22" | **Weight:** 310 lbs

**Bottom to Drywall Stop:** 6  $\frac{3}{4}$ " | **Viewing Area:** 51  $\frac{5}{8}$ "



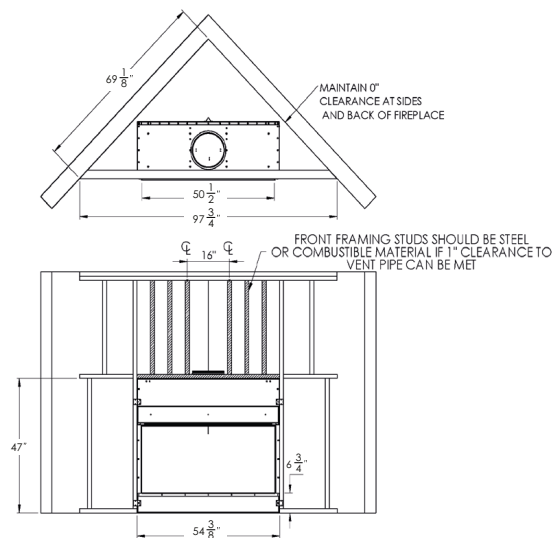
# CORNER VIEW

## FRAMING DIMENSIONS



**Width:** 54  $\frac{3}{8}$ " | **Height:** 47" | **Wall to Wall:** 97  $\frac{3}{4}$ " | **Weight:** 310 lbs

**Bottom to Drywall Stop:** 6  $\frac{3}{4}$ " | **Viewing Area:** 50  $\frac{1}{2}$ " | **Angle:** 69  $\frac{1}{8}$ "



## MINIMUM CLEARANCE TO COMBUSTIBLES

Back and sides of fireplaces	0" minimum
Floor	0" minimum
Perpendicular wall to opening	19" minimum
Top of fireplace	0" or top of studs minimum
Chimney outer pipe surface	1" minimum

## VENTING

12" B-Vent

\*Minimum Height 14"

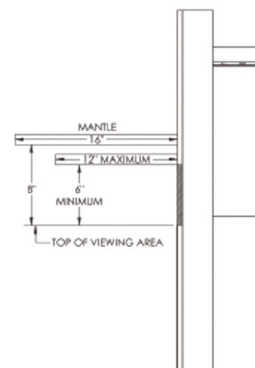
\*No more than two 45° offsets

*\*Unless using power vent*

## MANTEL CLEARANCES

A combustible mantle shelf may be installed a maximum of 12" (22.9 cm) from the wall.

A combustible mantle shelf may be installed at a minimum of 6" above the opening of the fireplace and a maximum of 12" from the wall.



## REQUIREMENTS FOR TV INSTALLATION

You can safely place a TV above the Summit fireplace, but the required clearance will depend on the TV manufacturer's guidelines.

When installing a TV 18" above the opening of the fireplace a mantel for heat deflection is required. If installing a TV 18" or more above the opening please refer to the TV manufacturer's required clearances guideline.



## PRODUCT CODES

USA	ANSI Z21.50.2019
CAN	CSA 2.22.2019

## MAKEUP-AIR REQUIREMENTS

SUMMIT SIZE	CONFIGURATION	CFM
48"	Front View	413
48"	Corner View	582
48"	Bay View	751

The product information provided is not complete and is subject to change without notice.

To avoid the risk of fire and potential injury, product installation must adhere strictly to instructions contained in the Installation and Operation Manual.